

# Medisoft® Version 20

## Featuring Medisoft Mobile and Patient Intake

# How can Medisoft Mobile with Patient Intake help make your practice more efficient?

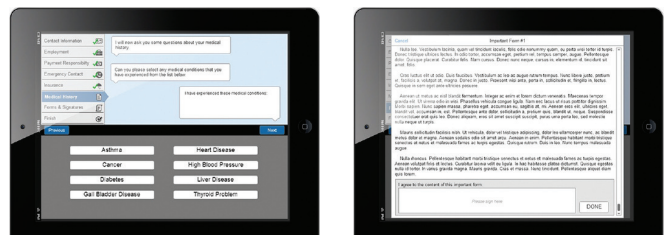
Available exclusively with Medisoft v20.

Medisoft Mobile reduces data entry time, helping free up staff to address focus on more important meaningful tasks. It allows patients, not staff, to quickly add new, or verify existing, patient information, including:

- Demographics
- Employment
- Payment responsibility
- Insurance
- Emergency contact
- Medical history
- Consent to any office form



Available on iPad®, iPhone® and Android™  
Try it now!



Note: Patient Intake feature is supported only on Tablet devices. See System Requirements for more information.

Contact Us Today!

\*Any descriptions of future functionality reflect current product direction, are for informational purposes only and do not constitute a commitment to provide specific functionality. Timing and availability remain at McKesson's discretion and are subject to change and applicable regulatory approvals.



Medisoft® is a registered trademark of McKesson Corporation and or one of its subsidiaries. iPad® and iPhone® are trademarks of Apple Inc., registered in the U.S. and other countries. Android™ is a trademark of Google Inc.